

3861 – North Glade Elementary



North Region Office
District 1 – Miami Carol City Feeder

Attendance Boundary Community Meeting
(Advised Schools)

Dr. Yesenia M. Aponte
Region Superintendent

Leonard Torres
ABC Region Director



January 2025

Attendance Boundary Committee (ABC) Process

Each year community members from various civic and educational advocacy organizations have diligently served on the ABC committee, reviewing recommendations of proposed attendance boundaries for new schools and changes to the boundaries of existing schools.

- The Superintendent of Schools, with the assistance of the Office of School Leadership and Performance and the Office of School Facilities, develop proposed boundary recommendations.
- The proposed recommendations are presented at region meetings to the affected school communities.
- The boundary recommendations will then be reviewed by the 17 Attendance Boundary Committee members.

The development of attendance zone recommendations with community involvement continues to be a primary goal of this School Board, the Superintendent of Schools, and the Attendance Boundary Committee.

Attendance Boundary Committee (ABC) Factors Considered

DECLINING ENROLLMENT
AND ABILITY TO CONDUCT A
VIABLE EDUCATIONAL
PROGRAM

COMPLIANCE WITH CLASS
SIZE REDUCTION MANDATE

IMPACT ON EXCEPTIONAL
STUDENT EDUCATION
PROGRAMS

USE OF AVAILABLE STUDENT
STATIONS WITHIN
CONTIGUOUS AREAS

DEGREE AND EXTENT OF
TRANSPORTATION

PROGRAMMATIC IMPACT DUE
TO LACK OF STUDENT
HOUSING

REDUCTION OF THE NUMBER
OF SCHOOLS STUDENTS
MUST ATTEND

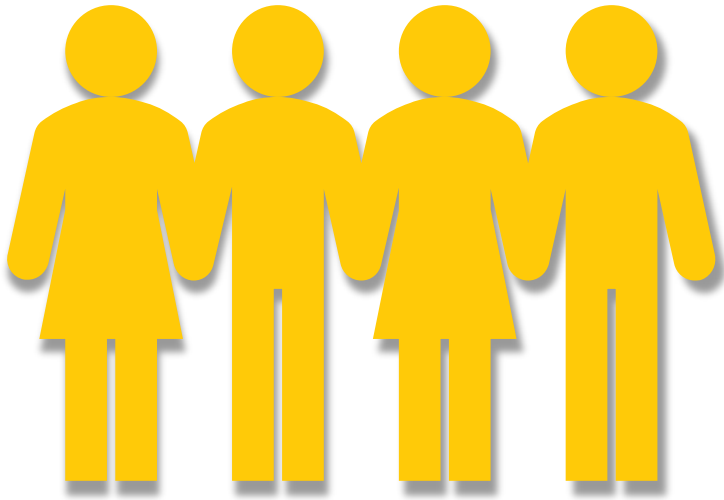
INTEGRITY OF FEEDER
SYSTEMS

ASSIGNMENT OF STUDENTS
FROM NEW RESIDENTIAL
DEVELOPMENTS TO SPECIFIC
SCHOOLS PRIOR TO
COMPLETION OF
DEVELOPMENTS

CONSTRUCTION OF NEW
SCHOOLS

PROMOTION AND
MAINTENANCE OF DIVERSE
SCHOOL ENROLLMENTS

REDUCTION OR ELIMINATION
OF RACIAL ISOLATION TO
THE EXTENT PRACTICAL



Student Diversity Factors



- ▶ White
- ▶ Black
- ▶ Hispanic
- ▶ Asian/Pacific Islander
- ▶ Multiracial
- ▶ Exceptional Student Education Programs
- ▶ Free/Reduced Price Lunch
- ▶ English Language Learners
- ▶ Male
- ▶ Female

Attendance Boundary Committee (ABC) Timeline

Sept-Oct

Send initial memorandum - appointee of appointment of Attendance Boundary Committee (ABC) Members, Superintendent's appointees and alternates and orientation meeting calendar invite.

Orientation meeting for ABC members

ABC receives permanent Florida Inventory of School Houses (FISH) capacities.

November

Region Superintendents present targeted/advised school recommendations to ABC.

ABC reviews Permanent FISH Capacities and identifies initially targeted/advised schools.

Principals are notified of initially targeted/advised schools.

Principals schedule meetings with community and student leaders.

Principals of initially targeted/advised schools send written communication to parents.

December

Principals and community leaders appeal initial targeted/advised schools. ABC identifies final targeted/advised schools.

Principals of final targeted/advised schools notified.

Regions submit community meeting dates/information to School Leadership and Performance for posting of targeted schools.

January

Regions hold community meetings jointly with Office of School Facilities and School Leadership and Performance to present proposed boundary recommendations to affected communities and to receive their input.

Regions modify recommendations as needed and assist citizens with recommendations.

Regions submit camera ready reports of all community information meetings to School Leadership and Performance after each meeting.

Attendance Boundary Committee (ABC) Timeline (cont'd)

February

All community recommendations must be submitted to respective Region Office by noon. ABC reviews recommendations submitted by community/Region Offices. Principals schedule meetings with community and student leaders to inform them of recommendations affecting their school that will be presented to ABC. Recommendations are also posted on bulletin board, school website, and/or other prominent location at school. Diversity, Equity, and Excellence Advisory Committee School Board Administration Building (DEEAC) meeting at which ABC boundary recommendations and alternate attendance boundary proposals are presented by regions.

March

Region Superintendents present recommendations approved by the ABC to Superintendent of Schools, School Board Attorney, and appropriate staff.
Principals send written communication to affected communities and schedule community informational meetings to inform community of superintendent's recommendations and alternate attendance boundary proposals that affect their school.

April

School Board Conference Session Attendance Zones.
School Board Meeting - Initial Reading Attendance Zones.

June

School Board Meeting
Final Reading Attendance Zones

Why a meeting with North Glade Elementary?

USE OF AVAILABLE STUDENT
STATIONS WITHIN
CONTIGUOUS AREAS

- Early Communication with Community Stakeholders
- Transparent Conversations
- Opportunity to Incorporate Stakeholder Feedback into Future Plans



Advised Status

The definition “Advised Status” is that status which results when population trends noted in the Current School Region Transfer Report, indicate that changes for the upcoming year are probable. Factual situations leading to “Advised Status” include:

- Growth in school attendance area that probably will produce overcrowding which cannot be relieved by the addition of modular classrooms(s).
- The population of a school is declining and the ability to conduct a viable educational program is not probable.
- Changes in other school areas could impact a particular school requiring changes in that school.

In such cases, it has been the practice of ABC, although not required to “ADVISE” a school that a boundary change will most probably be required in the upcoming year.

The use of the “Advised Status” procedure is desirable because:

- It serves as a reminder to the ABC (many of whose members will be new in the following year), and the school administrators of the challenge of a particular school and the need for its careful review.
- It gives the school administration, its students, and parents as much advance notice as possible of the probable changes, so that a plan of action may be developed, if deemed appropriate.



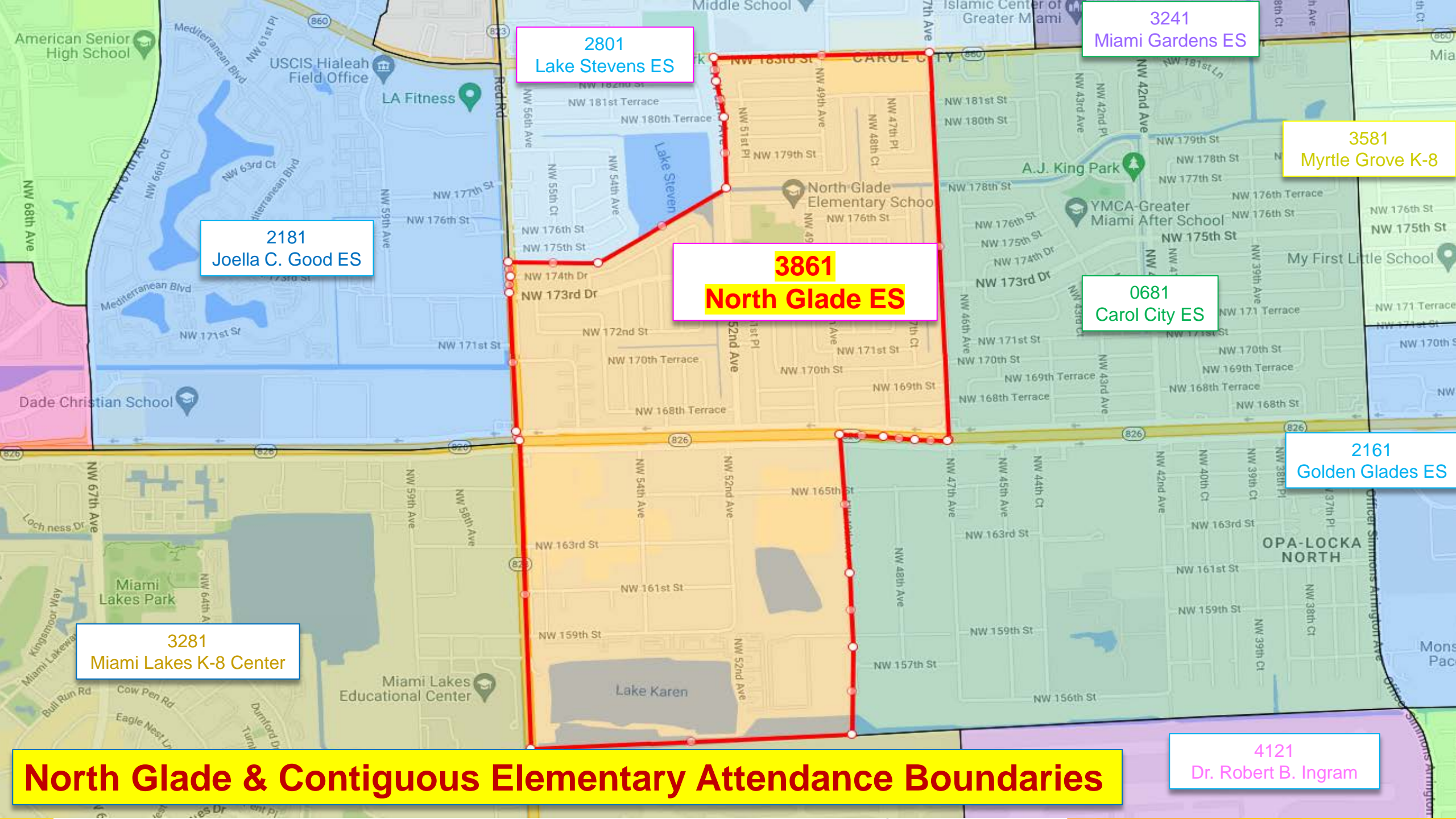
5000 NW 177 Street
Miami, FL 33055

North Glade Elementary School is a traditional public school located in Western Miami Gardens, FL which is in a large suburb setting. Miami Gardens is a city in north-central Miami-Dade County, Florida, United States. Miami Gardens had a population of 111,640 as of 2020. It is the largest predominantly African-American municipality in the State of Florida and boasts many Caribbean residents.

The school was originally constructed in 1958 and is comprised of 12 buildings on the 11.00 acres of land which make up the campus. North Glade Elementary is part of the Miami Carol City feeder pattern which has an overall utilization of 42%.

The student population of North Glade Elementary School is 216 and the school serves PK-5. The breakdown of student ethnicity is 13% Black, 84% Hispanic, and 3% White. Student gender consists of 48% female students and 52% male students. The school enrolls 65% economically disadvantaged students.





2801
Lake Stevens ES

3241
Miami Gardens ES

3581
Myrtle Grove K-8

2181
Joella C. Good ES

3861
North Glade ES

0681
Carol City ES

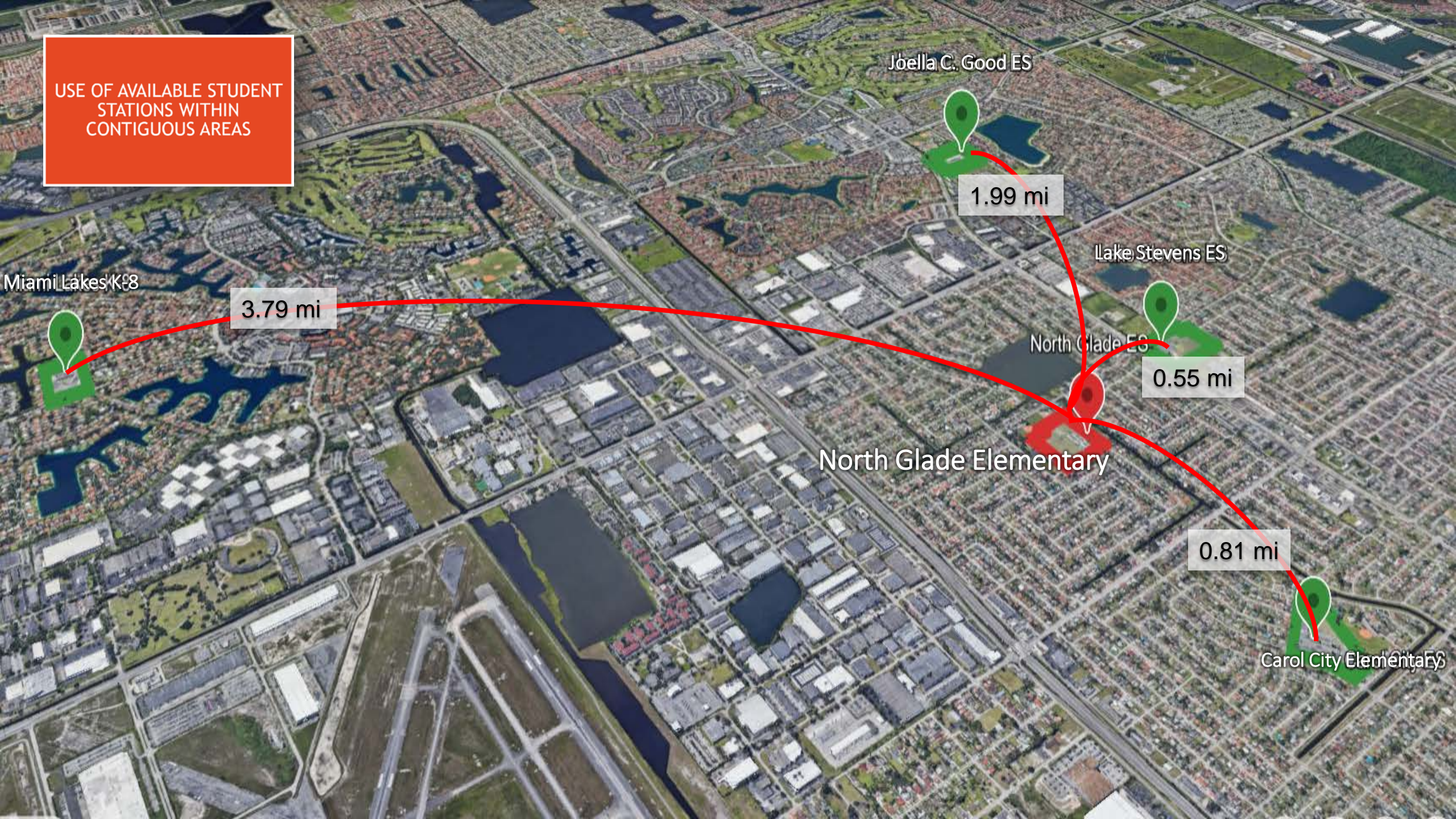
2161
Golden Glades ES

3281
Miami Lakes K-8 Center

4121
Dr. Robert B. Ingram

North Glade & Contiguous Elementary Attendance Boundaries

USE OF AVAILABLE STUDENT STATIONS WITHIN CONTIGUOUS AREAS



Joella C. Good ES

1.99 mi

Lake Stevens ES

0.55 mi

North Glade ES

North Glade Elementary

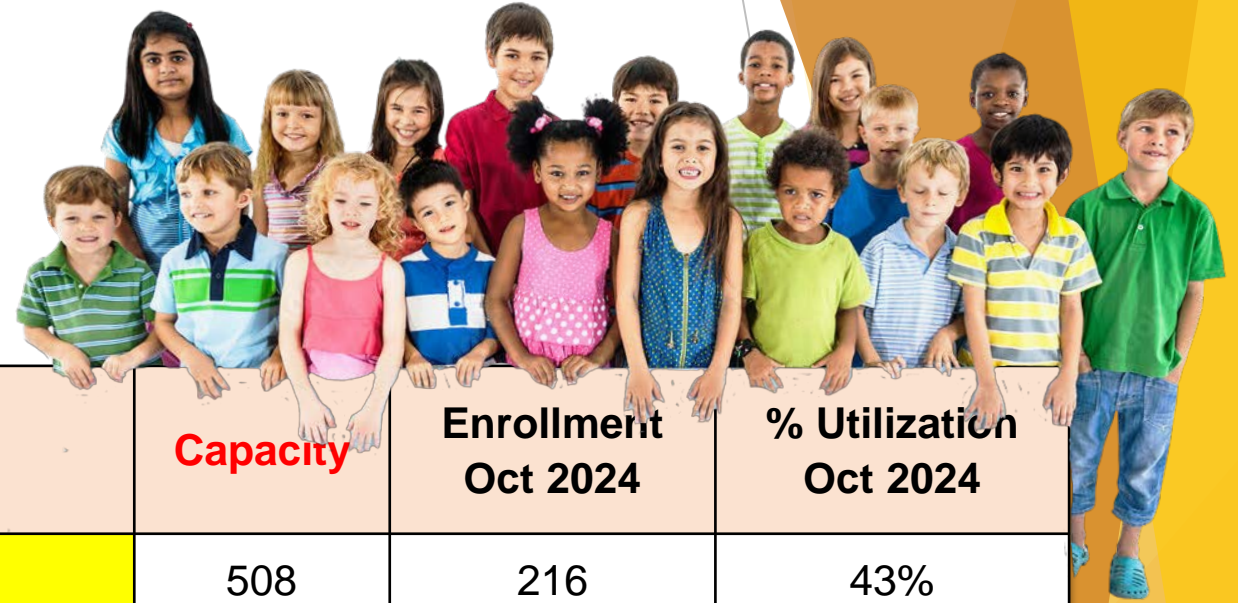
0.81 mi

Carol City Elementary

Miami Lakes K-8

3.79 mi

USE OF AVAILABLE STUDENT STATIONS WITHIN CONTIGUOUS AREAS



Loc	School Name	Capacity	Enrollment Oct 2024	% Utilization Oct 2024
3861	NORTH GLADE ELEMENTARY	508	216	43%
2801	LAKE STEVENS ELEMENTARY	476	255	54%
0681	CAROL CITY ELEMENTARY	637	308	48%
2181	JOELLA C. GOOD ELEMENTARY	963	941	98%
3281	MIAMI LAKES K-8 CENTER	1364	1196	88%

Enrollment data from Assessment, Research, and Data Analysis (ARDA) October 2024 - Survey 2

Five-Year Utilization Trend



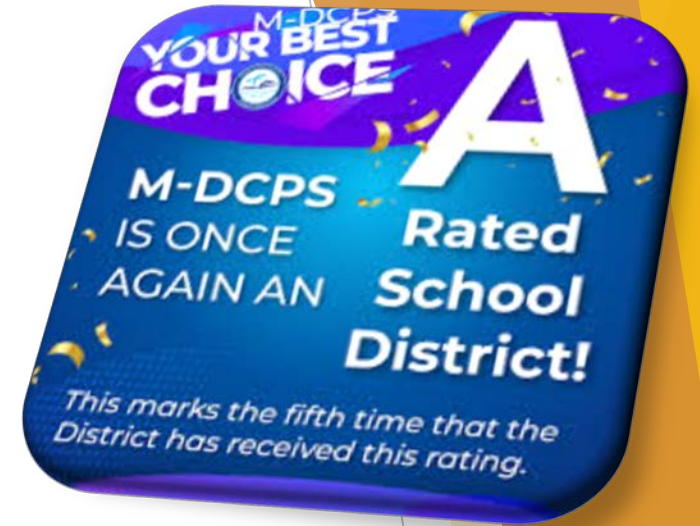
Loc	School Name	20-21	21-22	22-23	23-24	24-25
3861	NORTH GLADE ELEMENTARY	35% (178)	33% (168)	37% (189)	43% (220)	43% (216)

Enrollment data from Assessment, Research, and Data Analysis (ARDA) October - Survey 2

- North Glade ES currently enrolls 43% (162 students) of the 376 PK-5 Miami-Dade students living within the boundary that currently attend an M-DCPS school.

Data source: Location Analytics 12/09/24

Academics & Accountability



Five-Year Accountability Trend

Loc	School Name	17-18	18-19	20-21*	21-22	22-23	23-24
3861	NORTH GLADE ELEMENTARY	B	B	C*	C	C	A

*Unofficial school grade based on points obtained

Loc	School Name	20-21	21-22	22-23	23-24	24-25
3861	NORTH GLADE ELEMENTARY	T1	T1S	T1S	T1S	T1

Reenvisioning Goals

- ❖ Maximize the use of available student-seats
- ❖ Improve educational program offerings
- ❖ Increase overall outcomes

Encompass: District 1 - Miami Carol City Feeder



Positives about the school (programs, offerings)

- ▶ **“A”** Rated School
- ▶ **NEW** T.E.A.M. class for 2024-2025 school year
- ▶ **NEW** Chess Club for the 2024-2025 school year
- ▶ Free VPK – 4-year-olds (full-day)
- ▶ Free afterschool tutoring
- ▶ Free Afterschool Program till 6 pm (Big Ideas)
Includes: homework help, dance, P.E., coding & art
- ▶ Music Achieve (Free afterschool music program)
- ▶ 5000 Role Models/Ladies of Distinction
- ▶ Science Lab
- ▶ Art & Music Studio
- ▶ 2 – Computer Labs
- ▶ Renovated Campus / GOB
- ▶ Warm & Caring Faculty/Staff



Positives about the school (programs, offerings)

- ▶ Annual Parent Events
 - ▶ Holiday Showcase
 - ▶ Honor Roll (Quarterly)
 - ▶ Fathers in Education Event
 - ▶ Spring Concert
 - ▶ End-of-Year Promotions
 - ▶ **NEW** Hispanic Heritage Showcase
 - ▶ **NEW** Black History Showcase
 - ▶ **NEW** Pastelitos with Abuelitos
- ▶ Students recognized and placed at
 - ▶ Miami Gardens Essay Contest
 - ▶ Miami Gardens Science Fair
 - ▶ Youth Fair (2024)
- ▶ School Recognitions
 - ▶ Value Matter School of the Year Award
 - ▶ Most Improved Attendance in the District
 - ▶ Sanitation Audit 99%



School Site Enrollment Plan Efforts

- **NEW** Marketing Materials
- **NEW** Hosted Private VPK providers event for Early Childhood Department
- Promotional Video (social media platforms & in school lobby)
- Flyers/Mailers (daycares, businesses, mailed to in-boundary students attending other schools)
- Strong Social Media Presence
- Website (eye-catching, user-friendly, interactive)
- Early recruiting for PK
- Retaining enrollment of PK students
- Principal present at arrival actively building relationships with parents and recruiting younger siblings
- Access to school Principal
- Parents recommending us to other parents
- Stellar Customer Service



School Site Enrollment Plan Efforts

- Challenges
 - Charter Schools (Proximity)
 - School Position Location
 - Online student transfer applications



2024-2025
ABC Advised Schools



IMPORTANCE OF STAKEHOLDER VOICE, IDEAS, AND INPUT



- Transparent Conversations
- Incorporating Feedback into Future Plans

Your voice is important in creating thoughtful solutions that meet the needs of our students and community.

Possible effects

- ▶ **If the school maintains or has an increase in enrollment, the school may remain on Advised Status to continue efforts.**
- ▶ **If school maintains or has a decline in enrollment, the school may be moved to Targeted Status where boundary changes may be necessary.**

Recommendations/Community Input

- ▶ Scan this QR Code to share your ideas or suggestions for North Glade Elementary School.





Contact Information

Leonard Torres ABC Regional Contact

Phone: (305) 572-2800

733 East 57 Street

Hialeah, FL 33013

E-mail: LeoTorres@dadeschools.net



Miami-Dade County Public Schools

Questions and Answers

